

# 20,000 SF Crane Served Warehouse

For

Lease

14440 Smith Road (Lot 6) • Humble, TX 77396



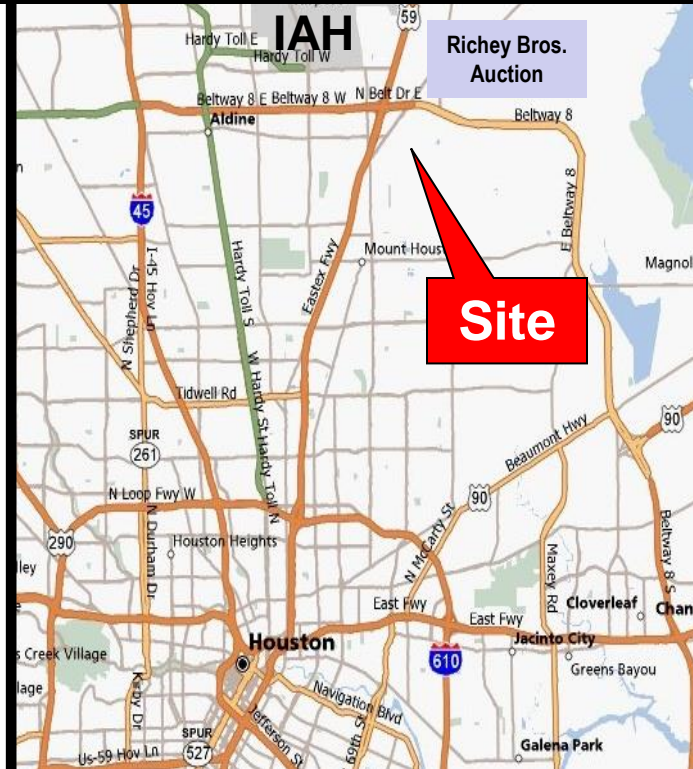
**For Lease Only: \$18,500 / month (\$.925 PSF), NNN**

## Location:

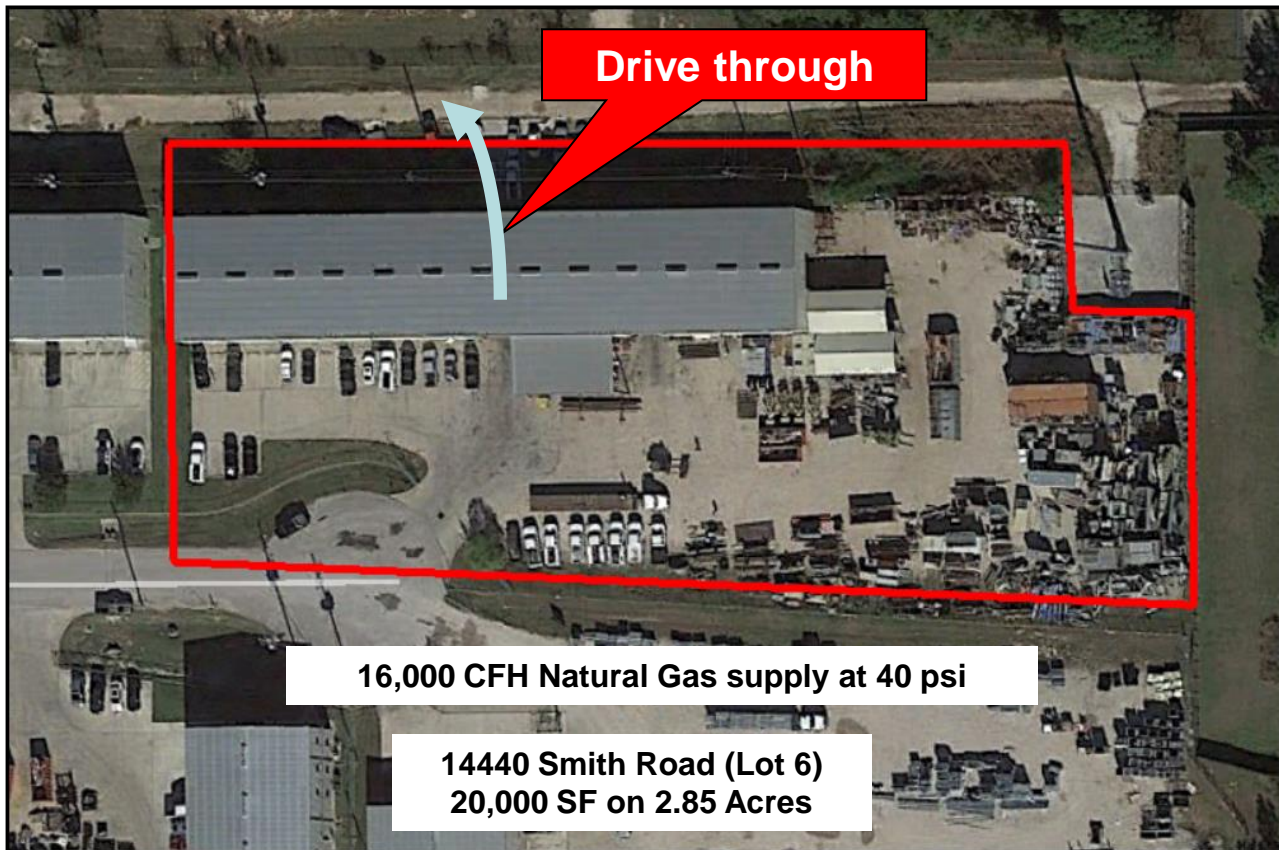
- ¼ mile south of Old Humble Rd
- Just southeast of Beltway 8 & US 59
- Key Map 375X

## Features:

- 20,000 SF Office Warehouse
- 1,875 SF of office
- Drive through capability
- Two 20-ton cranes with dual 10-ton hoists (20' hook height)
- 16 MCFH nat gas supply & heavy power
- 4 roll up doors up to 20' X 20'
- 2.85 acres, fenced and stabilized
- Can be sprinklered
- Utilities from City of Houston, but **OUTSIDE HOUSTON CITY LIMITS !!!**







**Drive through**

**16,000 CFH Natural Gas supply at 40 psi**

**14440 Smith Road (Lot 6)  
20,000 SF on 2.85 Acres**



**14440 Smith Road**

**Deed Restricted  
Smith Road Industrial Park  
32 Acres**